



何宇霆

GEOMETRIC VISUAL SIMILARITY LEARNING

IN 3D MEDICAL IMAGE SELF-SUPERVISED PRE-TRAINING

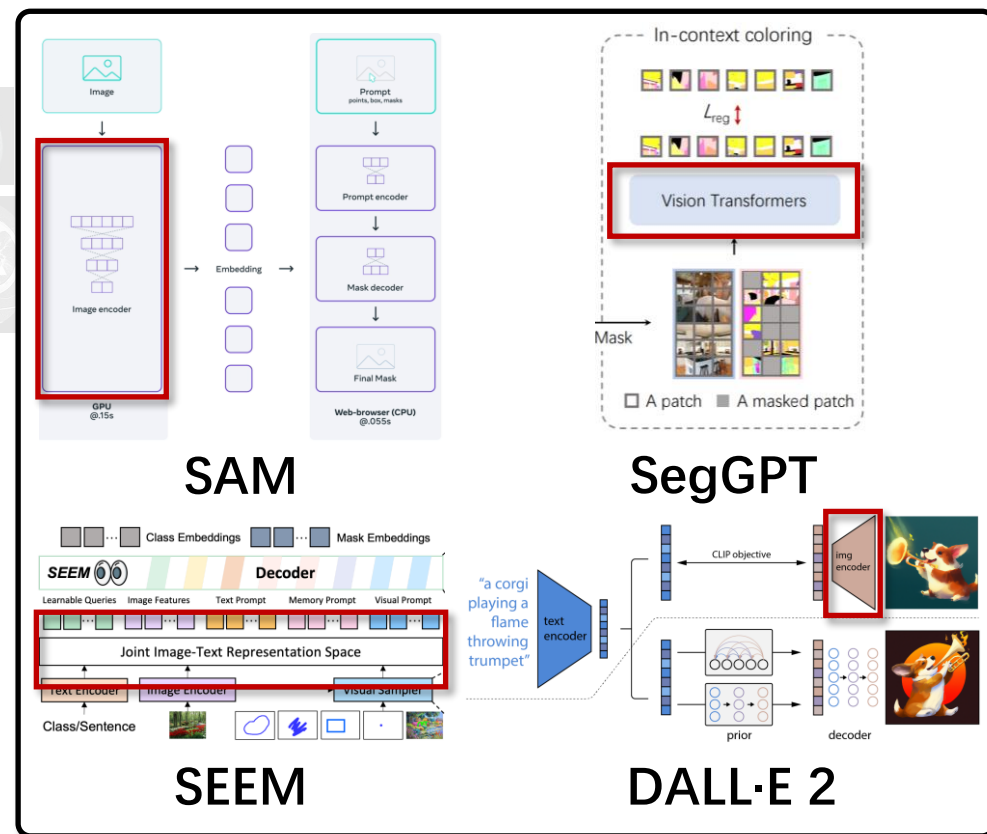
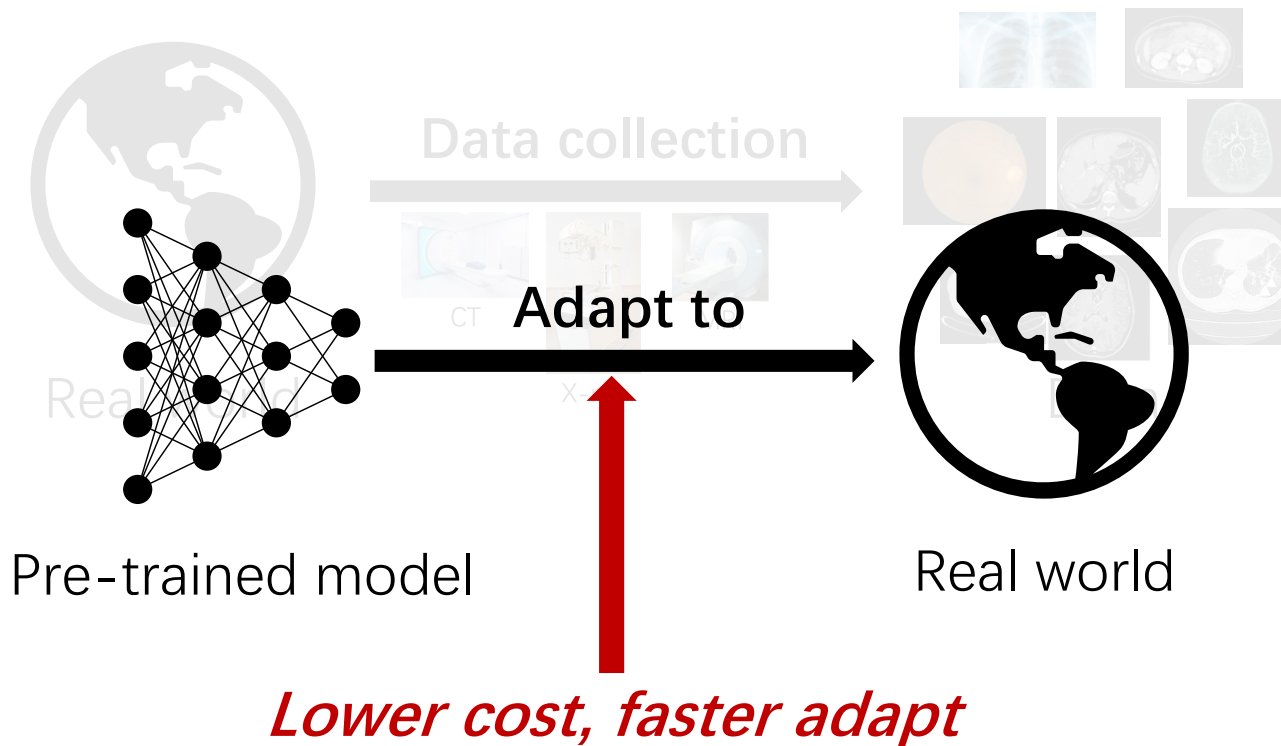
He Yuting (何宇霆)
Southeast University





BACKGROUND: SELF-SUPERVISED PRE-TRAINING

伊宇霆



Basis of AGI...



BACKGROUND:

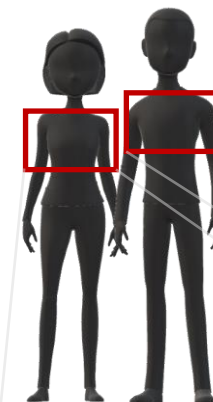
MEDICAL IMAGES V.S. NATURAL IMAGES

伊宇電



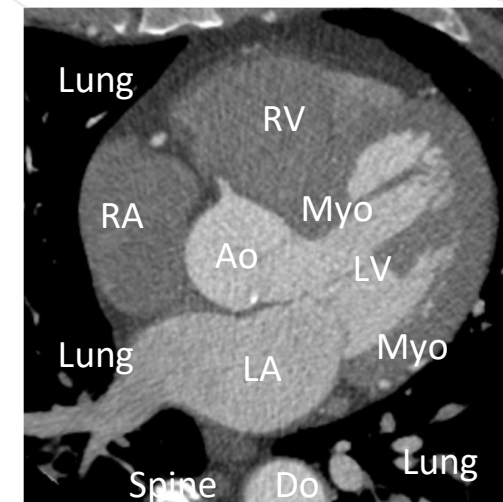
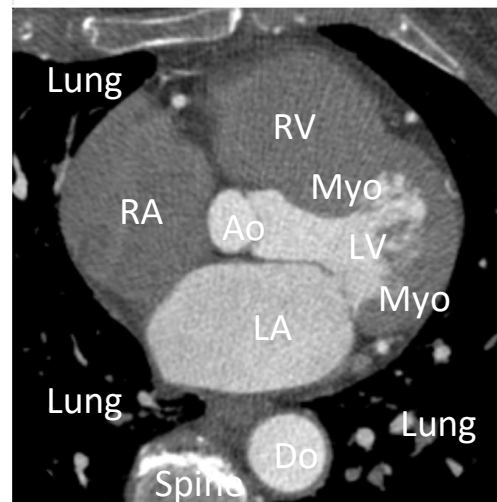
Natural images

- ✓ Scan from **large** scopes
- ✓ **Nonlimited** range and pose
- *Large inter-image **difference***



Medical images

- ✓ Scan from **small** scopes
- ✓ **Limited** range and pose
- *Large inter-image **similarity***



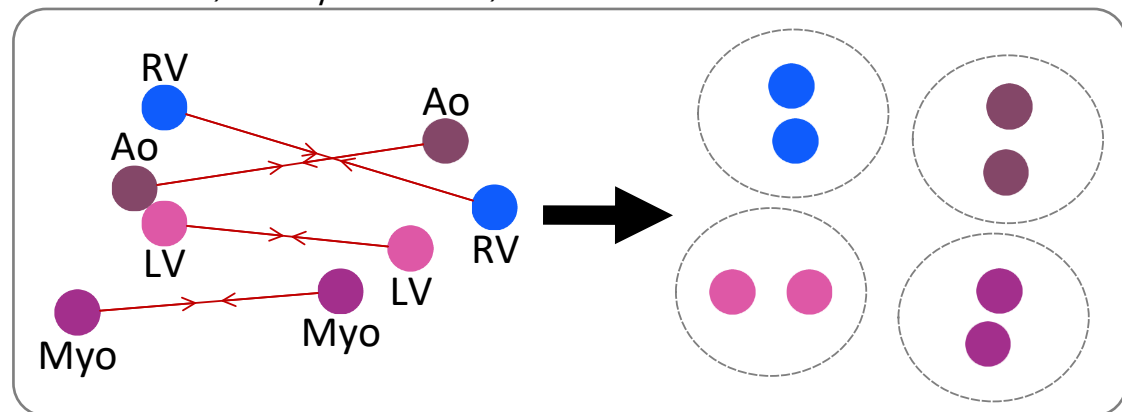
Opportunity: Learning inter-image similarity for the clustering of the same semantic regions



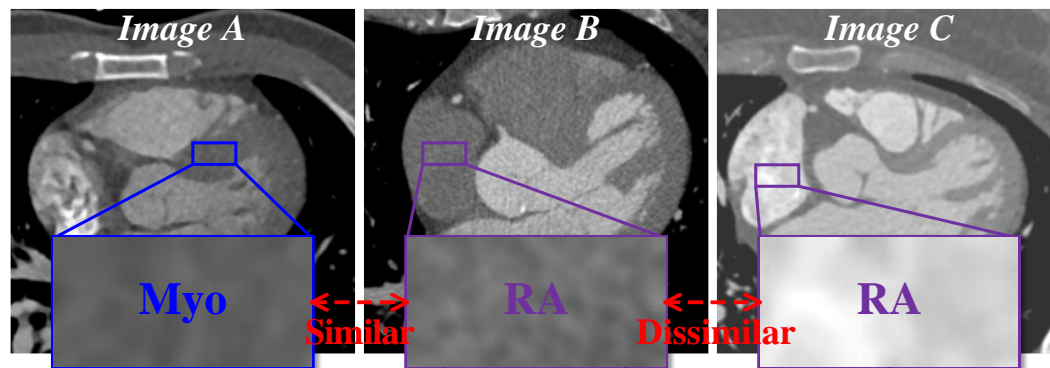
BACKGROUND: LIMITATION

伊宇震

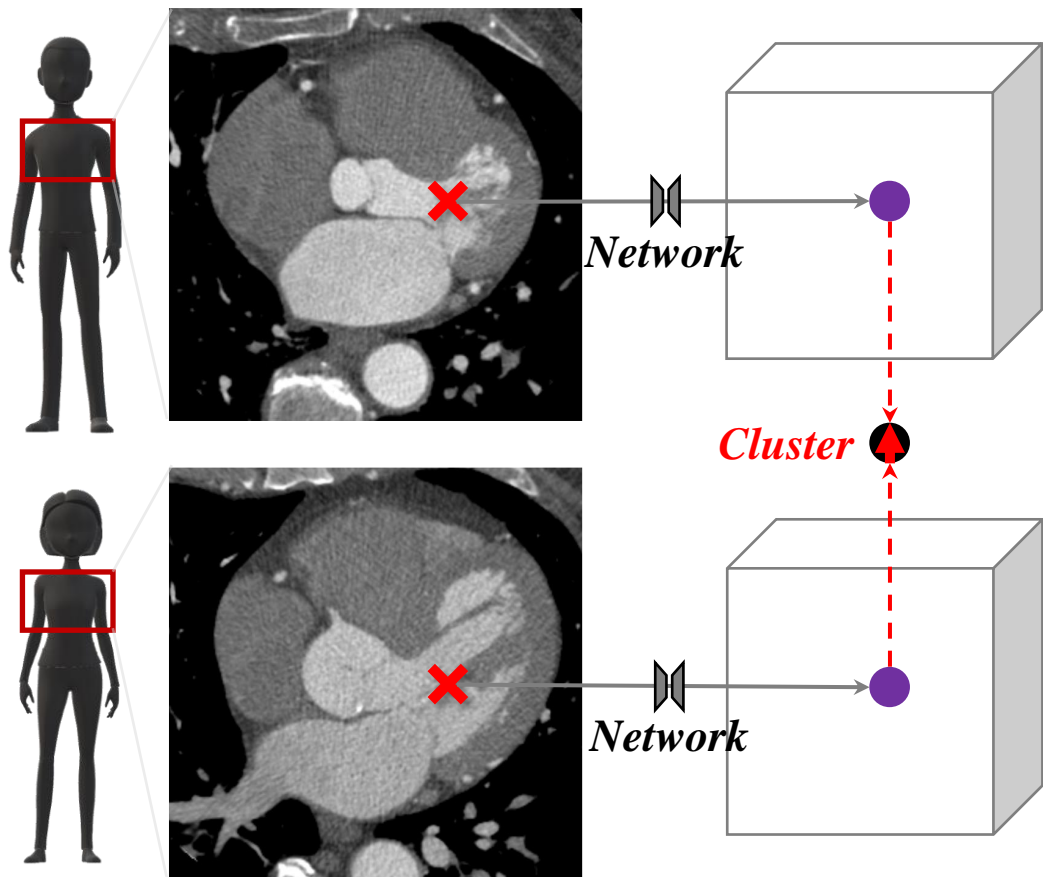
DenseCL, DeepCluster, etc.



Limitation: unreliable inter-image correspondence



a) **Different** semantic regions with **similar** appearance b) **Same** semantic regions with **dissimilar** appearance

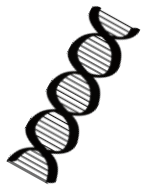


Wang, X., et al. (2021). Dense contrastive learning for self-supervised visual pre-training. CVPR (pp. 3024-3033).

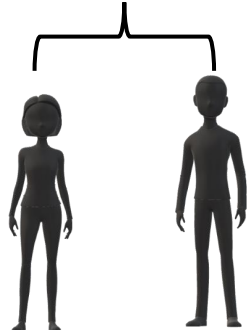


MOTIVATION: TOPOLOGICAL INVARIANCE

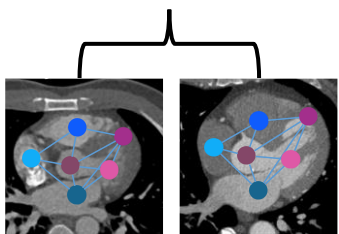
何宇霆



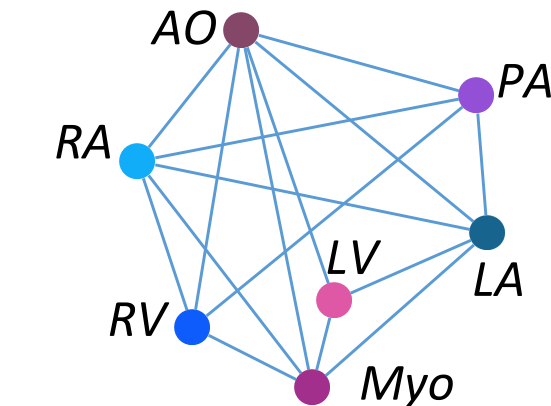
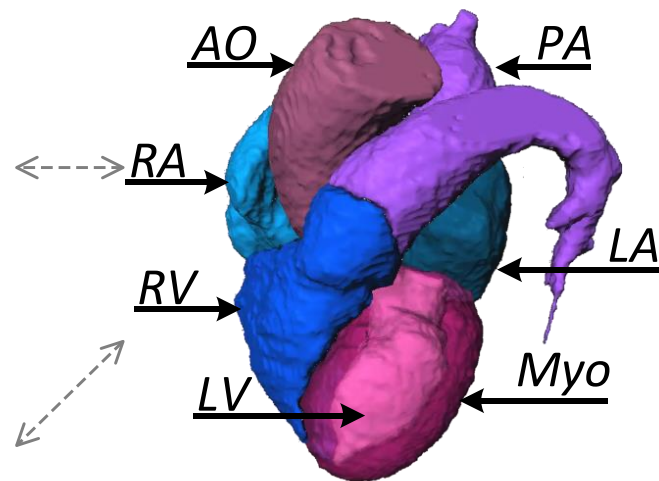
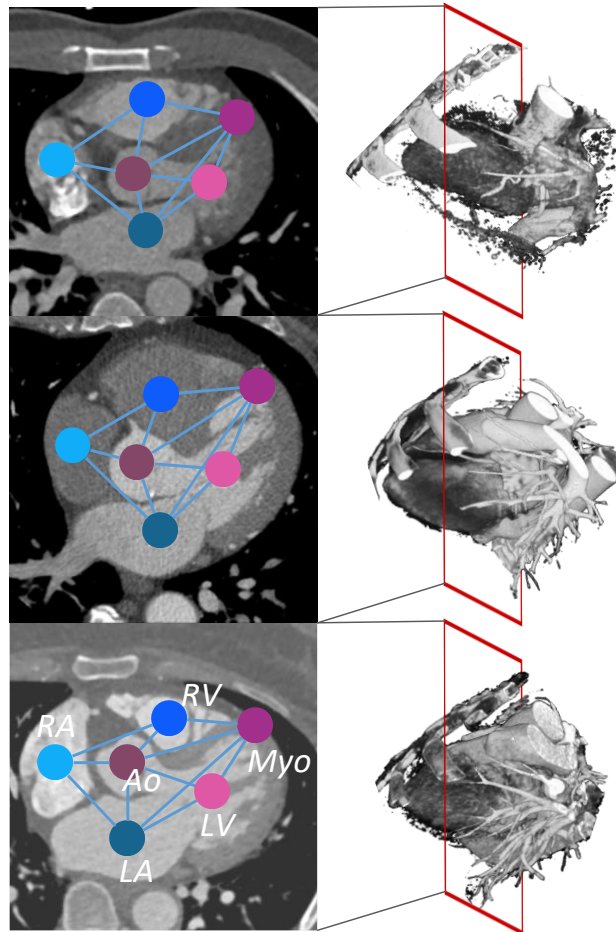
Gene consistency



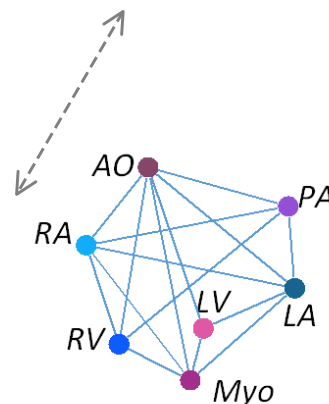
Human body consistency



Topological consistency



Topology of heart structures



*Consistent topology of
visual semantics*

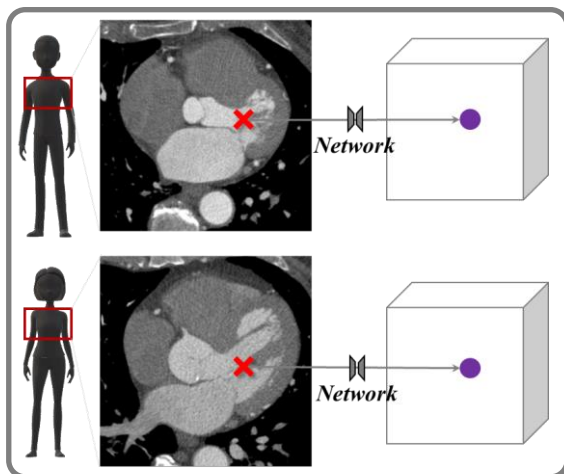
Hypothesis: Keeping the topology of 3D medical images will enhance the correspondence discovery



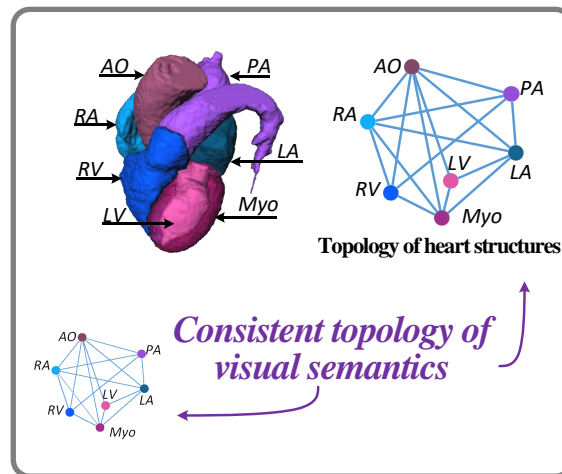
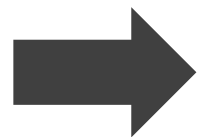
CONTRIBUTION:

GEOMETRIC VISUAL SIMILARITY LEARNING

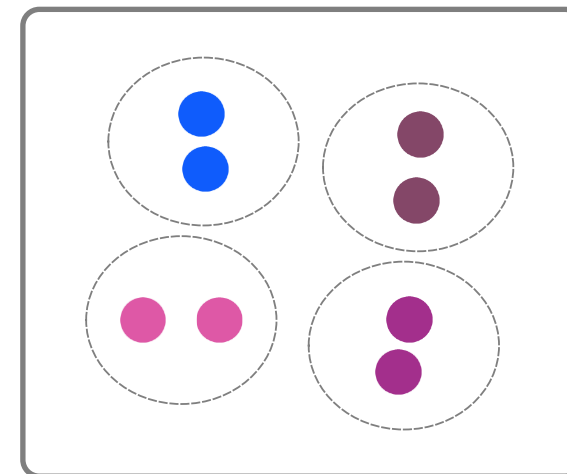
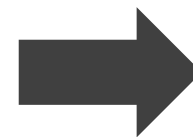
伊宇霆



Representation



Correspondence discovery based on topology



Clustering effect

- Advances the **learning of inter-image similarity in 3D medical image SSP** pushing the representability of pre-trained models;
- Propose **the Geometric Visual Similarity Learning (GVSL)** that embeds the prior of topological invariance into the correspondence learning;
- Present a novel SSP head, **Z-Matching head**, for simultaneously powerful global and local representation via GVSL.



METHODOLOGY:

GEOMETRIC VISUAL SIMILARITY LEARNING

何宇霆

Image x_B

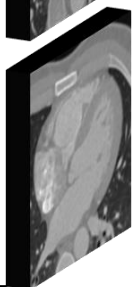
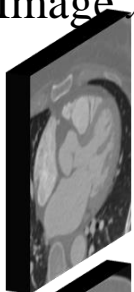


Image x_A

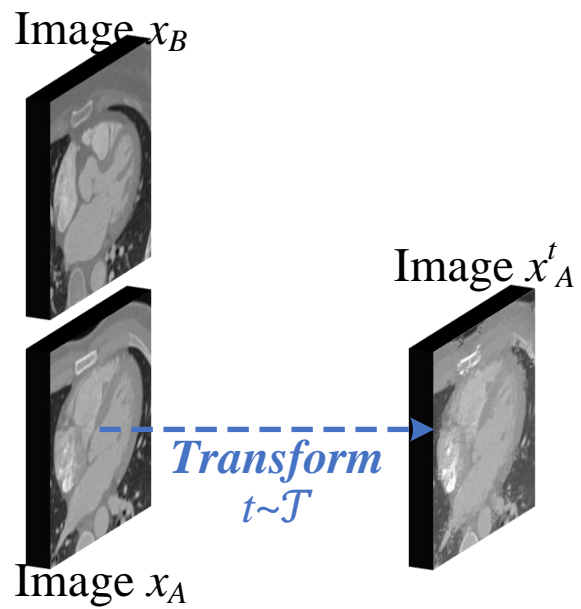
Two 3D images



METHODOLOGY:

GEOMETRIC VISUAL SIMILARITY LEARNING

何宇霆



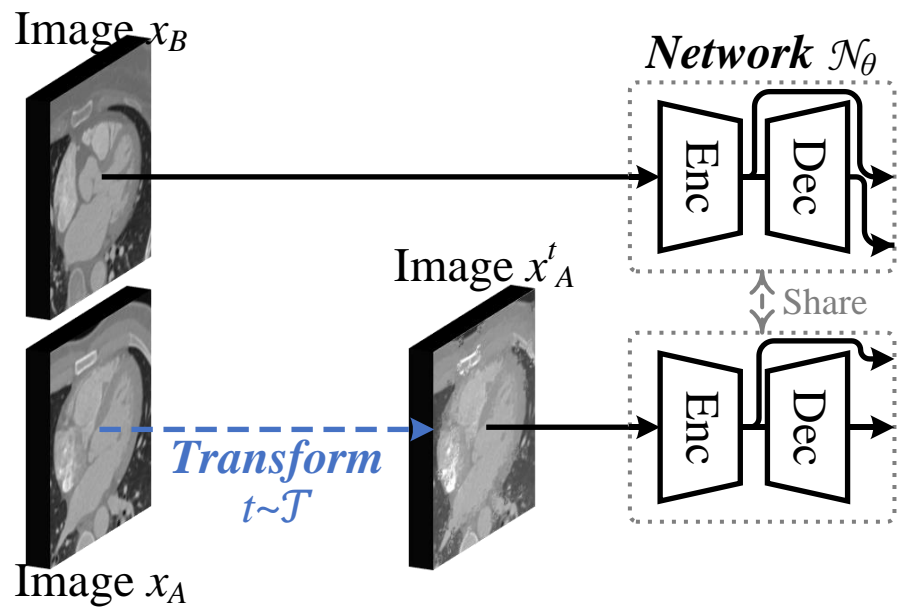
Augmentation for feature diversity



METHODOLOGY:

GEOMETRIC VISUAL SIMILARITY LEARNING

何宇霆



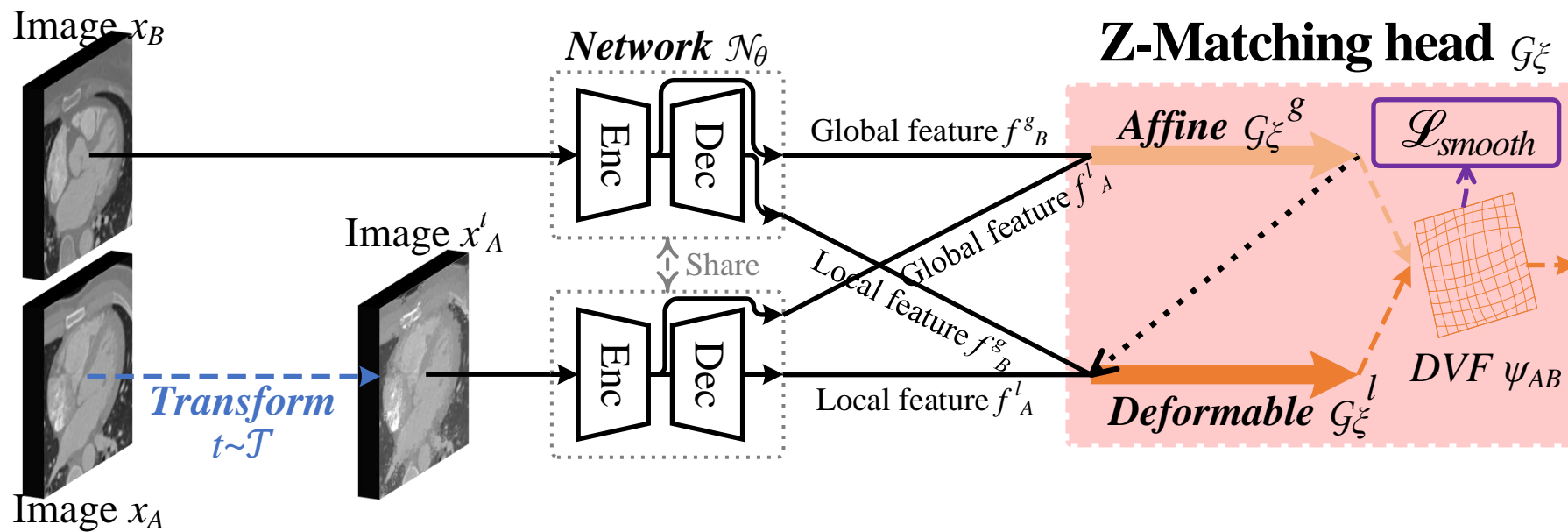
Feature extraction via two shared-weight networks



METHODOLOGY:

GEOMETRIC VISUAL SIMILARITY LEARNING

何宇霆



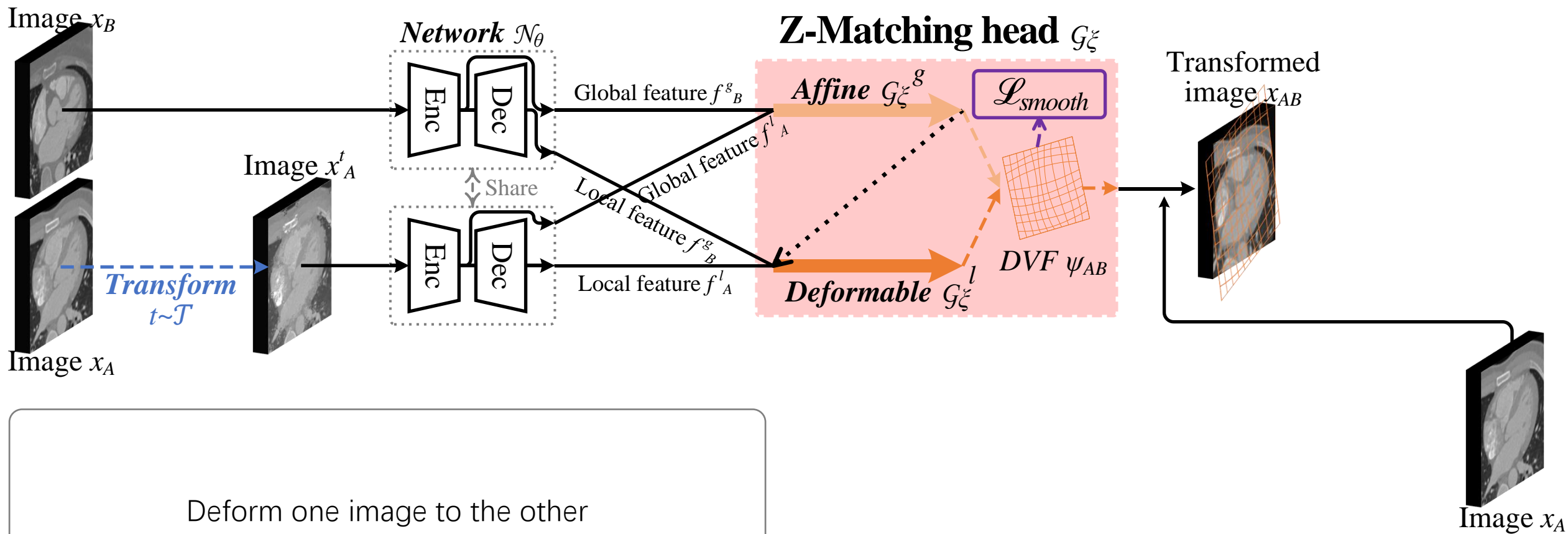
Predict correspondence



METHODOLOGY:

GEOMETRIC VISUAL SIMILARITY LEARNING

何宇霆

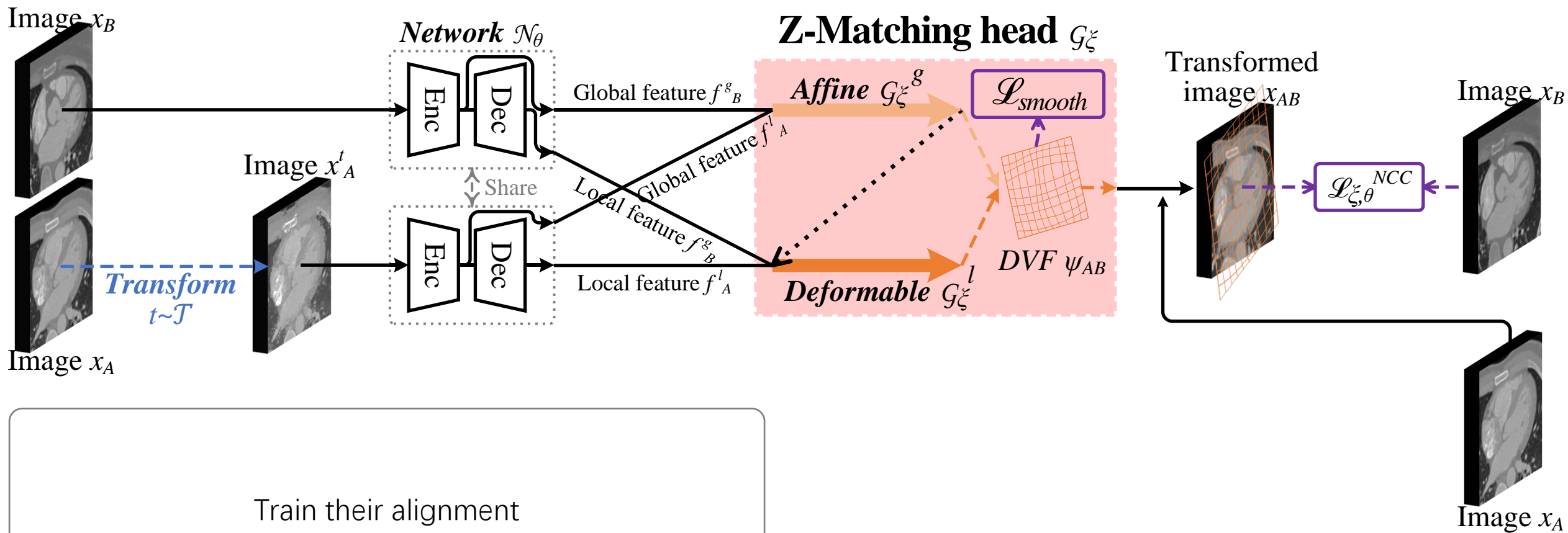




METHODOLOGY:

GEOMETRIC VISUAL SIMILARITY LEARNING

伊宇霆

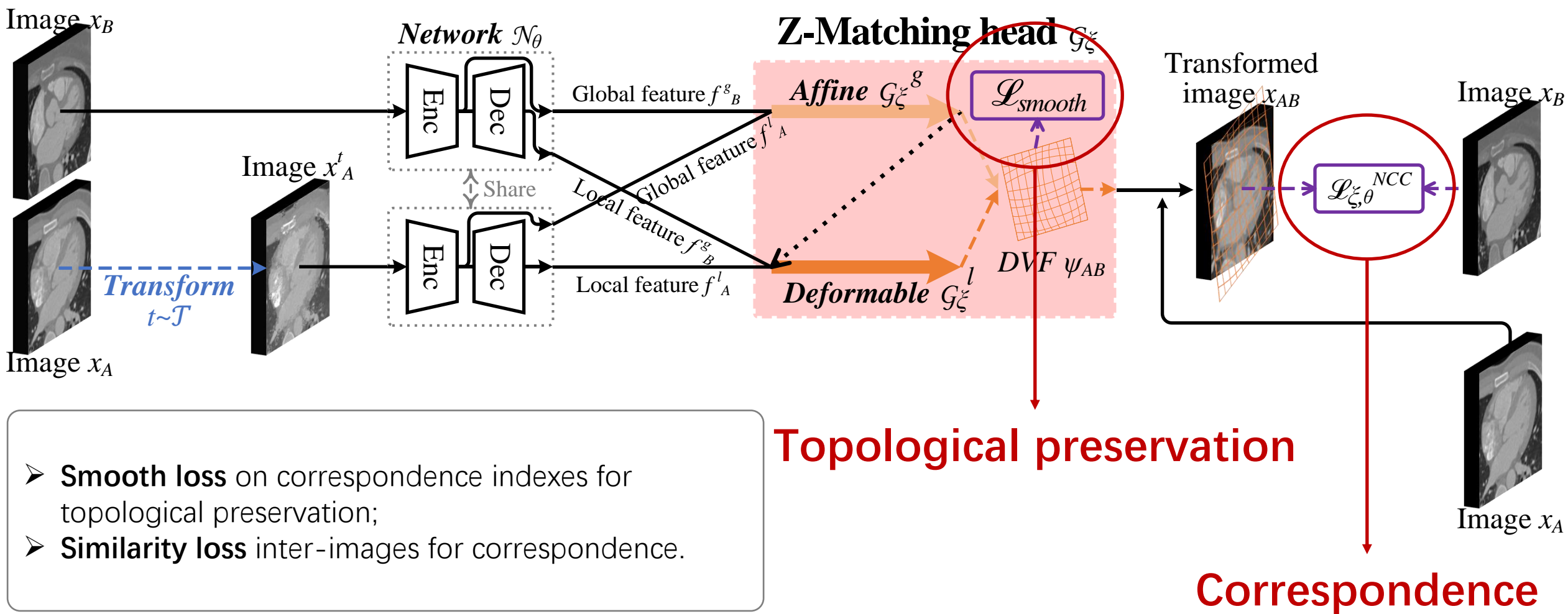




METHODOLOGY:

GEOMETRIC VISUAL SIMILARITY LEARNING

伊宇霆



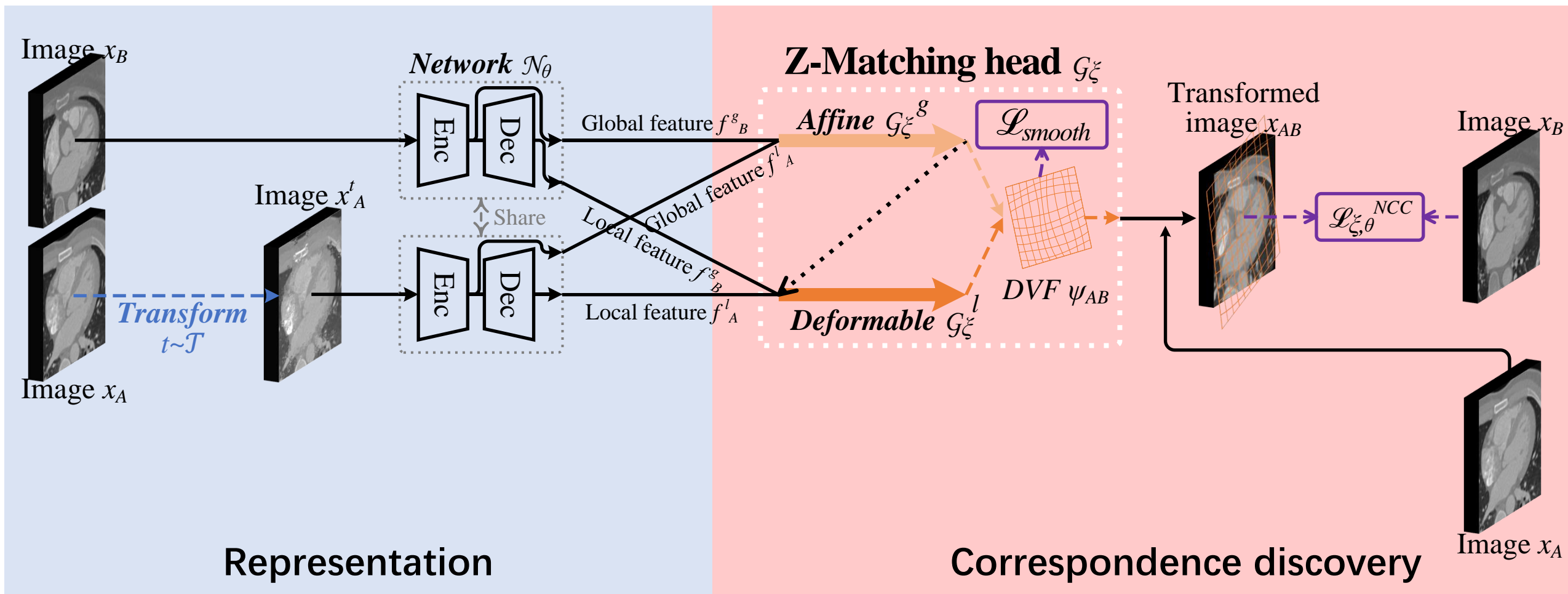
- **Smooth loss** on correspondence indexes for topological preservation;
- **Similarity loss** inter-images for correspondence.



METHODOLOGY:

GEOMETRIC VISUAL SIMILARITY LEARNING

何宇霆



Representation

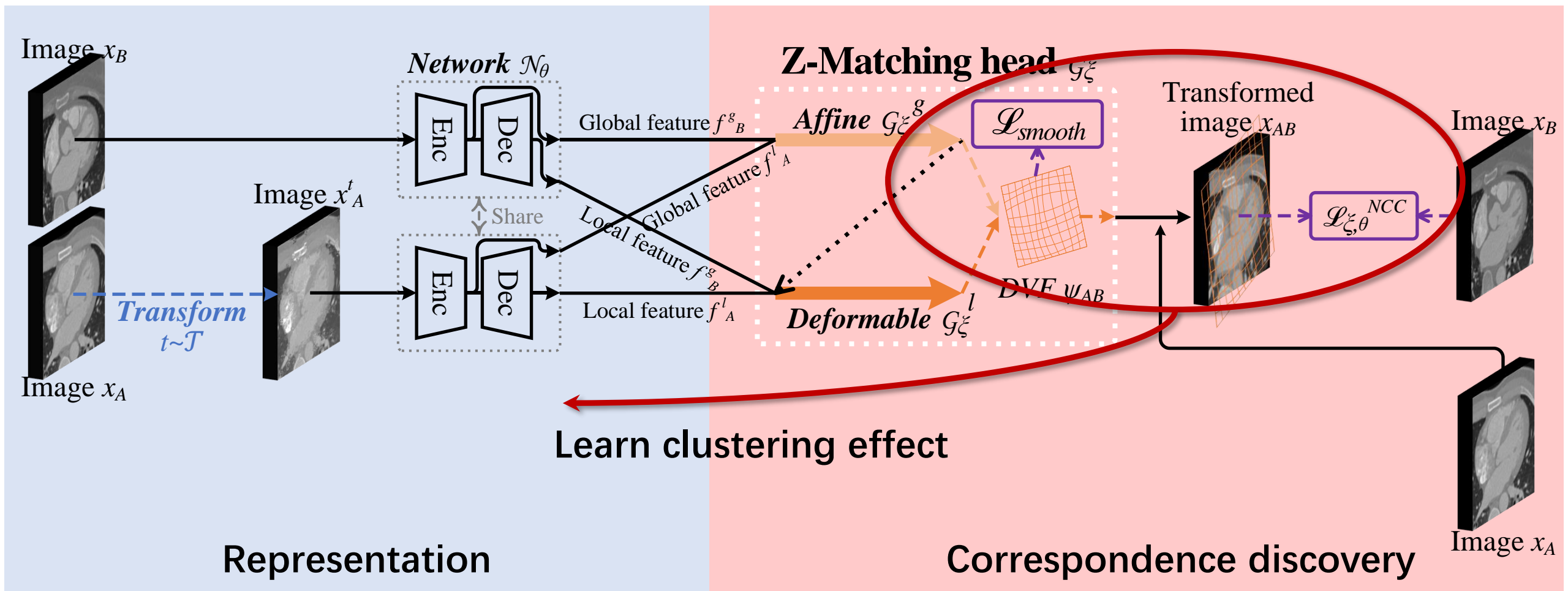
Correspondence discovery



METHODOLOGY:

GEOMETRIC VISUAL SIMILARITY LEARNING

伊宇霆

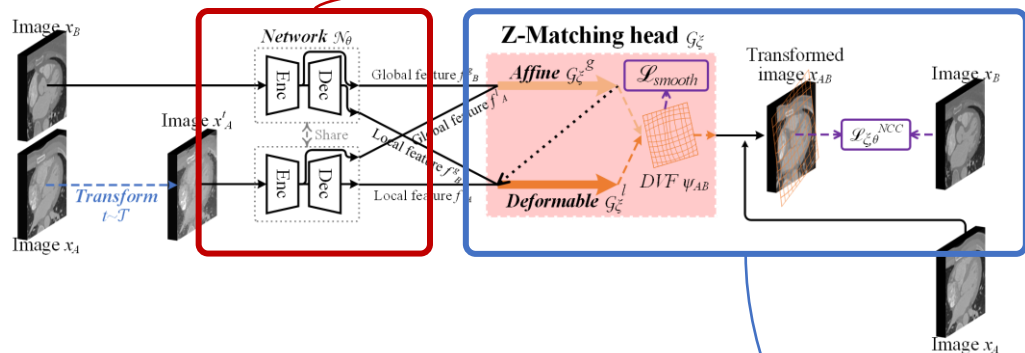




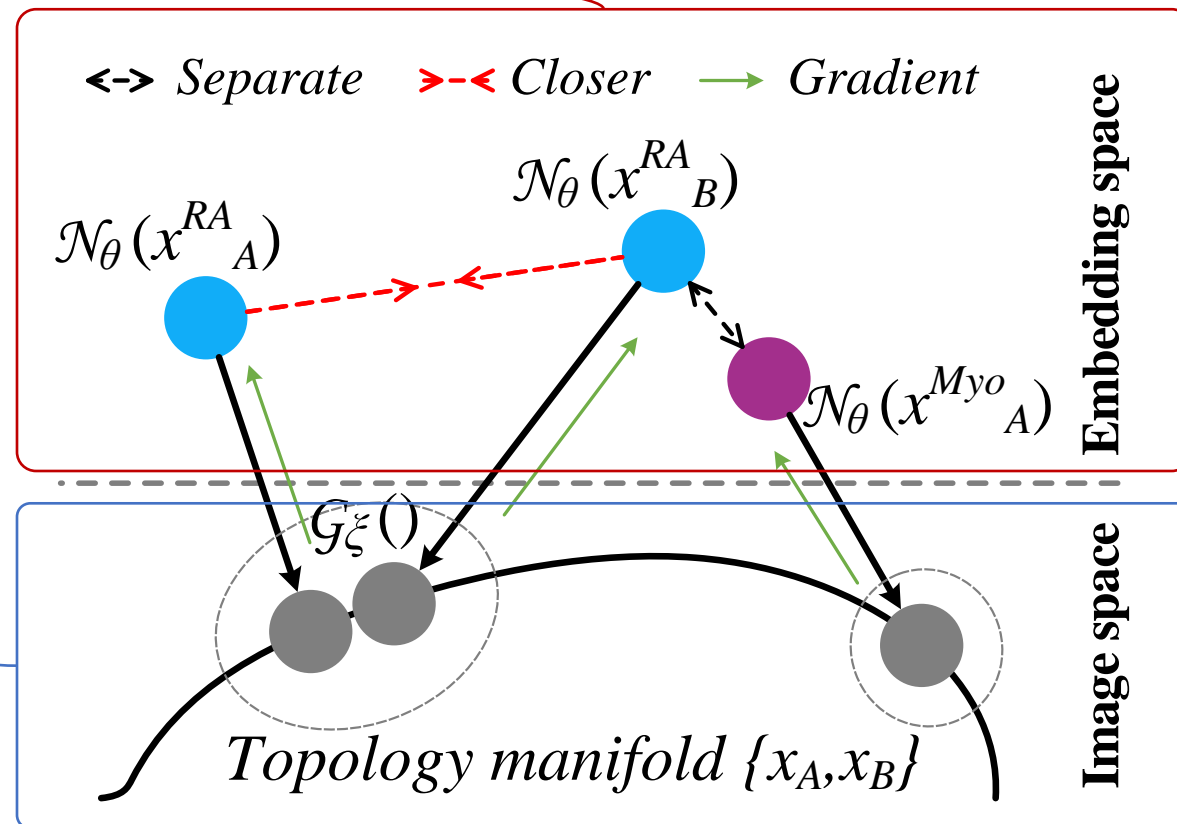
METHODOLOGY (INTUITIONS):

GEOMETRIC VISUAL SIMILARITY LEARNING

伊宇霆



- Implicitly embed a topology manifold inner the images into the measurement process, and measure the similarity on this topology manifold.

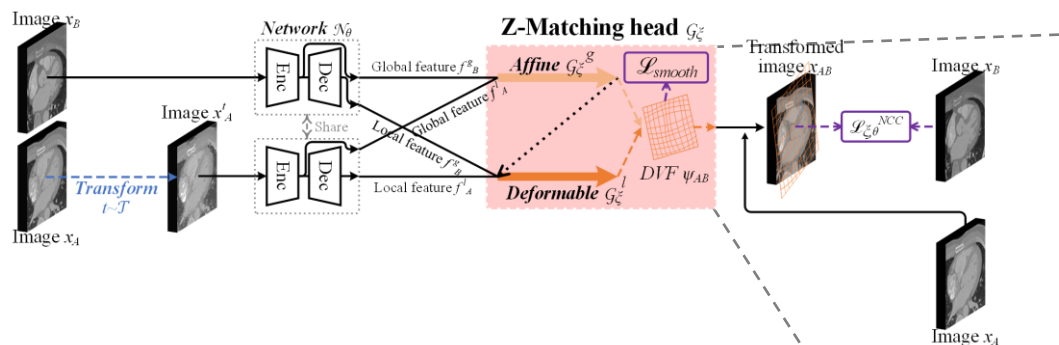




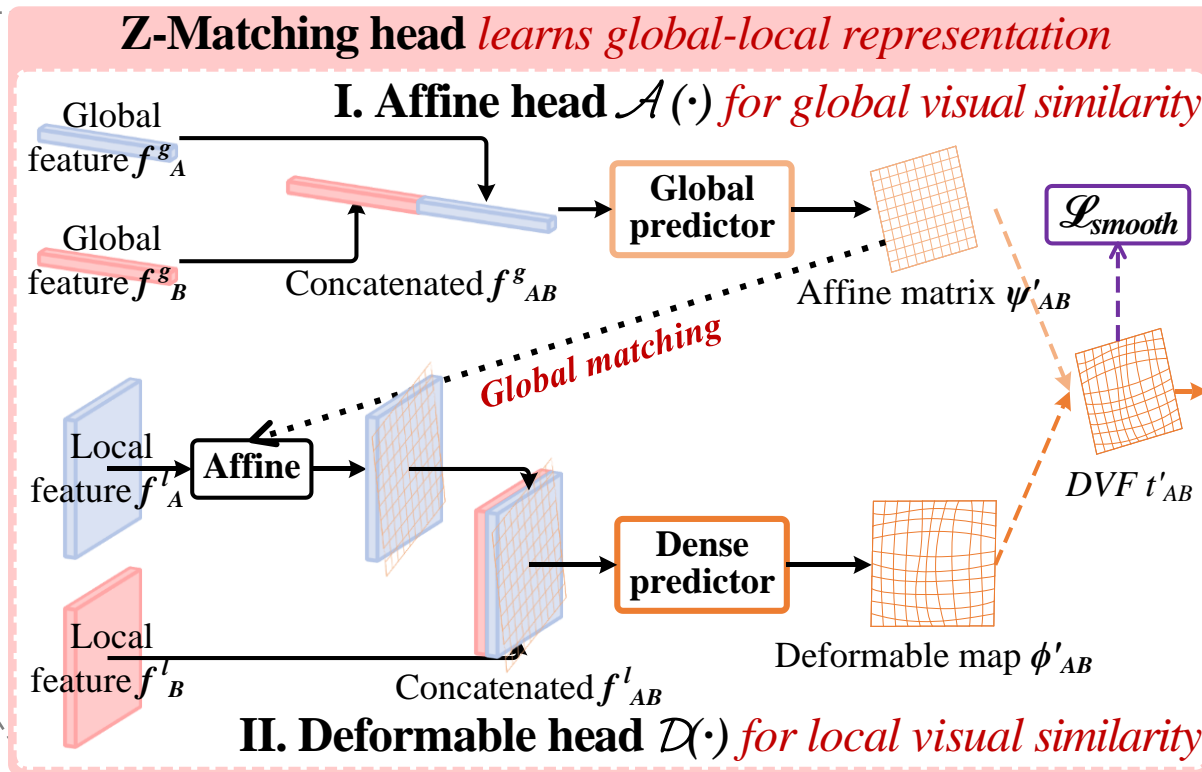
METHODOLOGY:

Z-MATCHING HEAD

何宇震



- **Affine head:** global visual similarity and alignment for global representation
- **Deformable head:** local visual similarity and alignment for dense representation

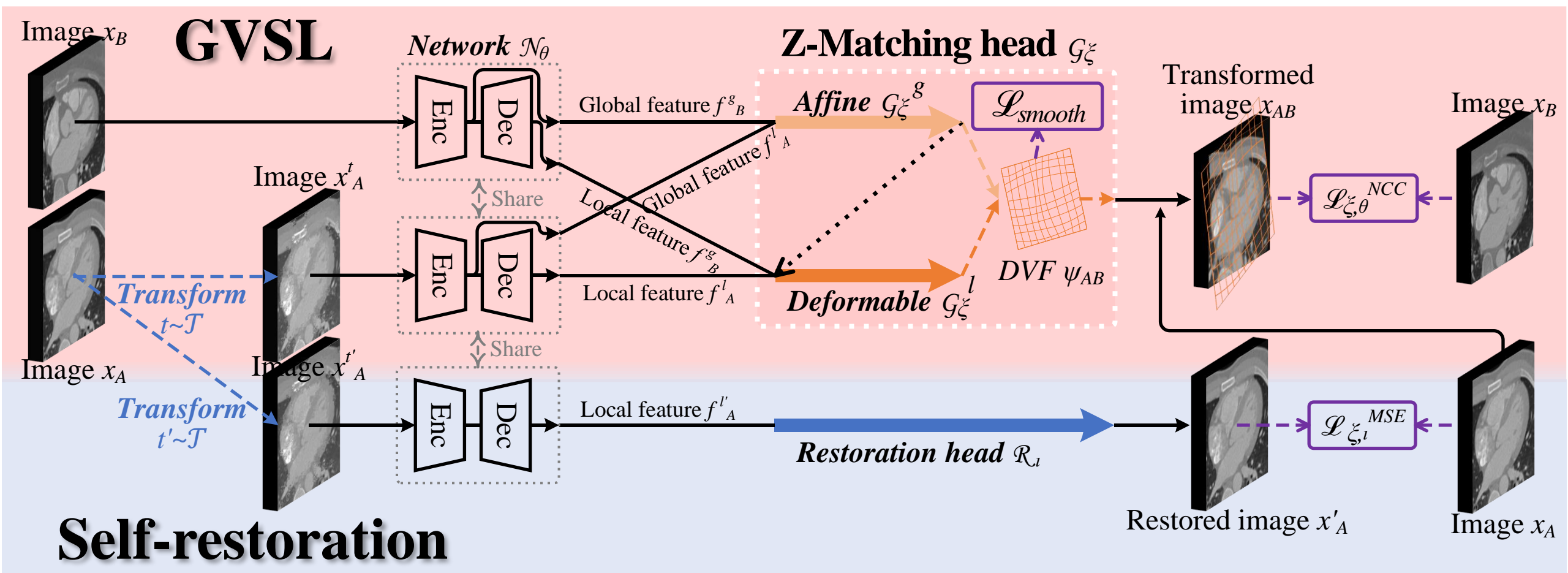




METHODOLOGY:

SELF-RESTORATION FOR WARM-UP

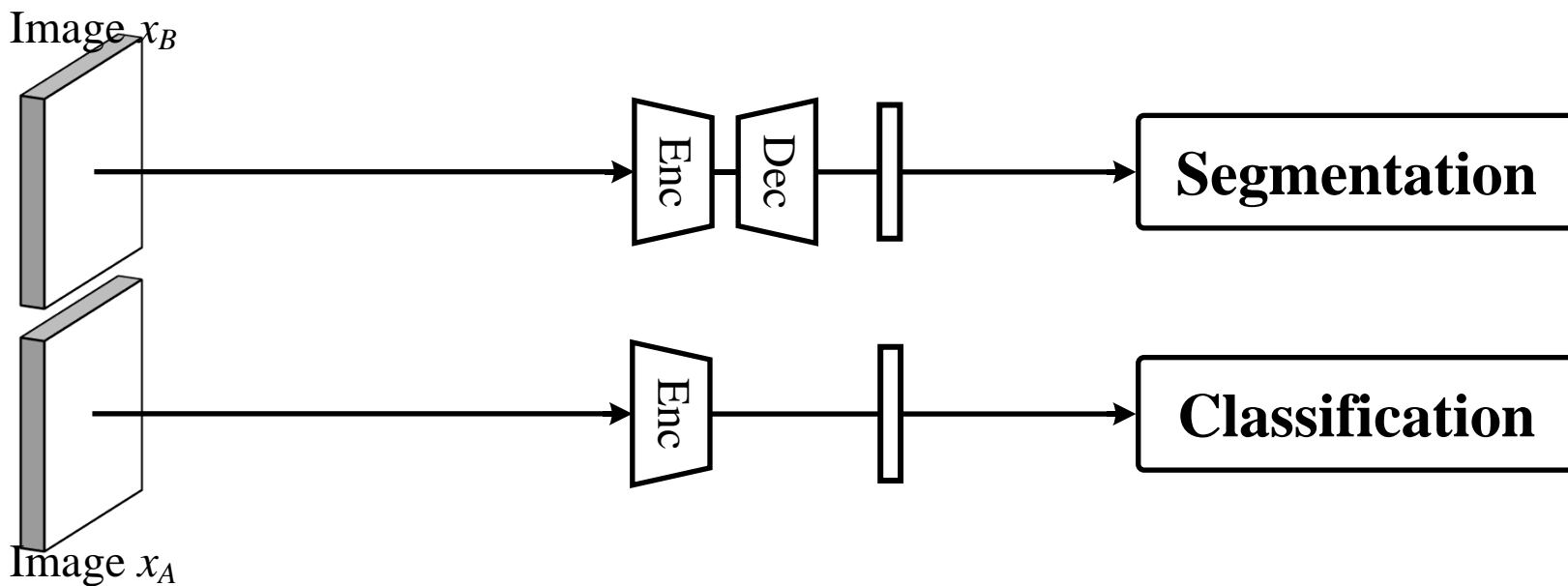
伊宇霆





EXPERIMENT: EVALUATION TASKS

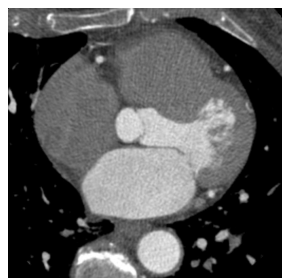
伊宇震



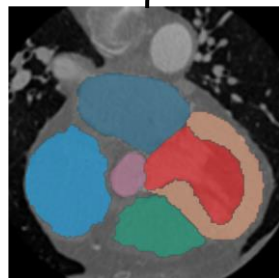
- ❑ Heart structures on CT (SHC)
- ❑ Coronary artery on CT (SAC)
- ❑ Brain tissues on MR (SBM)
- ❑ COVID-19 on CT (CCC)

Inner-scene

Inter-scene



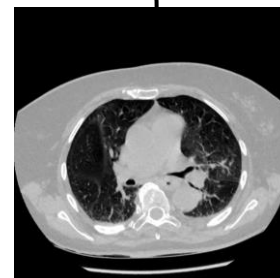
Pretrain dataset:
302 CCTA images



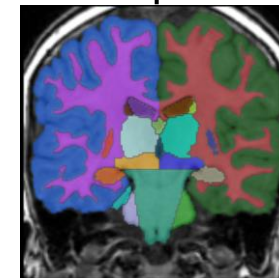
SHC
-MMWHS
-15/5/40



SAC
-ASOCA
-15/5/20



CCC
-STOIC
-1k/400/
600



SBM
-CANDI
-40/20/43



EXPERIMENT:

LINEAR AND FINE-TUNING EVALUATION

伊宇震

Pre-training	a) Linear: powerful representation				b) Fine-tuning: great transferring			
	SHC _{DSC%}	SAC _{DSC%}	CCC _{AUC%}	SBM _{DSC%}	SHC _{DSC%}	SAC _{DSC%}	CCC _{AUC%}	SBM _{DSC%}
	Inner scene			Inter scene	Inner scene			Inter scene
Scratch	21.9	10.0	52.7	56.4	87.8	80.4	74.4	89.7
Denosing [40]	31.4(+9.5)	9.3(-0.7)	57.9(+5.2)	28.3(-28.1)	90.3(+2.5)	80.5(+0.1)	75.6(+1.2)	89.7
In-painting [30]	32.3(+10.4)	5.9(-4.1)	57.1(+4.4)	25.0(-31.4)	90.4(+2.6)	80.3(-0.1)	79.9(+5.5)	89.9(+0.2)
Models Genesis [48]	47.4(+25.5)	22.5(+12.5)	60.4(+7.7)	44.9(-11.5)	90.3(+2.5)	79.9(-0.5)	80.7(+6.3)	89.4(-0.3)
Rotation [23]	56.1(+34.2)	21.9(+11.9)	62.1(+9.4)	54.1(-2.3)	90.6(+2.8)	81.1(+0.7)	77.1(+2.7)	89.6(-0.1)
DeepCluster [2]	55.9(+34.0)	4.4(-5.6)	57.9(+5.2)	67.5(+11.1)	85.4(-2.4)	80.5(+0.1)	59.9(-14.5)	89.1(-0.6)
SimSiam [4]	56.5(+34.6)	9.7(-0.3)	61.0(+8.3)	66.2(+9.8)	87.5(-0.3)	80.1(-0.3)	73.6(-0.8)	89.8(+0.1)
BYOL [7]	46.9(+25.0)	8.6(-1.4)	53.7(+1.0)	52.7(-3.7)	88.6(+0.8)	80.7(+0.3)	76.5(+2.1)	89.5(-0.2)
SimCLR [3]	48.7(+26.8)	15.5(+5.5)	61.3(+8.6)	58.7(+2.3)	86.9(-0.9)	79.9(-0.5)	74.3(-0.1)	89.3(-0.4)
w/o Z-Matching	49.1(+27.2)	21.1(+11.1)	55.8(+3.4)	45.1(-11.3)	88.3(+0.5)	81.2(+0.8)	81.3(+6.9)	89.7
w/o Fundament	45.3(+23.4)	0.0(-10.0)	58.8(+6.4)	48.5(-7.9)	87.0(-0.8)	79.5(-0.9)	76.6(+2.2)	89.0(-0.7)
w/o Affine head	57.7(+35.8)	17.9(+7.9)	57.6(+4.9)	53.4(-3.0)	89.4(+1.6)	82.3(+1.9)	79.8(+5.4)	89.8(+0.1)
Our GVSL (Whole)	68.4(+46.5)	28.7(+18.7)	60.8(+8.1)	79.9(+23.5)	91.2(+3.4)	81.3(+0.9)	82.2(+7.8)	90.0(+0.3)

➤ Powerful inner-scene transferring for both large and small structures



EXPERIMENT:

LINEAR AND FINE-TUNING EVALUATION

伊宇震

Pre-training	a) Linear: powerful representation				b) Fine-tuning: great transferring			
	SHC _{DSC%}	SAC _{DSC%}	CCC _{AUC%}	SBM _{DSC%}	SHC _{DSC%}	SAC _{DSC%}	CCC _{AUC%}	SBM _{DSC%}
	<i>Inner scene</i>			<i>Inter scene</i>	<i>Inner scene</i>			<i>Inter scene</i>
Scratch	21.9	10.0	52.7	56.4	87.8	80.4	74.4	89.7
Denosing [40]	31.4(+9.5)	9.3(-0.7)	57.9(+5.2)	28.3(-28.1)	90.3(+2.5)	80.5(+0.1)	75.6(+1.2)	89.7
In-painting [30]	32.3(+10.4)	5.9(-4.1)	57.1(+4.4)	25.0(-31.4)	90.4(+2.6)	80.3(-0.1)	79.9(+5.5)	89.9(+0.2)
Models Genesis [48]	47.4(+25.5)	22.5(+12.5)	60.4(+7.7)	44.9(-11.5)	90.3(+2.5)	79.9(-0.5)	80.7(+6.3)	89.4(-0.3)
Rotation [23]	56.1(+34.2)	21.9(+11.9)	62.1(+9.4)	54.1(-2.3)	90.6(+2.8)	81.1(+0.7)	77.1(+2.7)	89.6(-0.1)
DeepCluster [2]	55.9(+34.0)	4.4(-5.6)	57.9(+5.2)	67.5(+11.1)	85.4(-2.4)	80.5(+0.1)	59.9(-14.5)	89.1(-0.6)
SimSiam [4]	56.5(+34.6)	9.7(-0.3)	61.0(+8.3)	66.2(+9.8)	87.5(-0.3)	80.1(-0.3)	73.6(-0.8)	89.8(+0.1)
BYOL [7]	46.9(+25.0)	8.6(-1.4)	53.7(+1.0)	52.7(-3.7)	88.6(+0.8)	80.7(+0.3)	76.5(+2.1)	89.5(-0.2)
SimCLR [3]	48.7(+26.8)	15.5(+5.5)	61.3(+8.6)	58.7(+2.3)	86.9(-0.9)	79.9(-0.5)	74.3(-0.1)	89.3(-0.4)
w/o Z-Matching	49.1(+27.2)	21.1(+11.1)	55.8(+3.4)	45.1(-11.3)	88.3(+0.5)	81.2(+0.8)	81.3(+6.9)	89.7
w/o Fundament	45.3(+23.4)	0.0(-10.0)	58.8(+6.4)	48.5(-7.9)	87.0(-0.8)	79.5(-0.9)	76.6(+2.2)	89.0(-0.7)
w/o Affine head	57.7(+35.8)	17.9(+7.9)	57.6(+4.9)	53.4(-3.0)	89.4(+1.6)	82.3(+1.9)	79.8(+5.4)	89.8(+0.1)
Our GVSL (Whole)	68.4(+46.5)	28.7(+18.7)	60.8(+8.1)	79.9(+23.5)	91.2(+3.4)	81.3(+0.9)	82.2(+7.8)	90.0(+0.3)

➤ Effective inter-scene transferring, but is not significant in fine-tuning



EXPERIMENT:

LINEAR AND FINE-TUNING EVALUATION

伊宇震

Pre-training	a) Linear: powerful representation				b) Fine-tuning: great transferring			
	SHC _{DSC%}	SAC _{DSC%}	CCC _{AUC%}	SBM _{DSC%}	SHC _{DSC%}	SAC _{DSC%}	CCC _{AUC%}	SBM _{DSC%}
	<i>Inner scene</i>			<i>Inter scene</i>	<i>Inner scene</i>			<i>Inter scene</i>
Scratch	21.9	10.0	52.7	56.4	87.8	80.4	74.4	89.7
Denosing [40]	31.4(+9.5)	9.3(-0.7)	57.9(+5.2)	28.3(-28.1)	90.3(+2.5)	80.5(+0.1)	75.6(+1.2)	89.7
In-painting [30]	32.3(+10.4)	5.9(-4.1)	57.1(+4.4)	25.0(-31.4)	90.4(+2.6)	80.3(-0.1)	79.9(+5.5)	89.9(+0.2)
Models Genesis [48]	47.4(+25.5)	22.5(+12.5)	60.4(+7.7)	44.9(-11.5)	90.3(+2.5)	79.9(-0.5)	80.7(+6.3)	89.4(-0.3)
Rotation [23]	56.1(+34.2)	21.9(+11.9)	62.1(+9.4)	54.1(-2.3)	90.6(+2.8)	81.1(+0.7)	77.1(+2.7)	89.6(-0.1)
DeepCluster [2]	55.9(+34.0)	4.4(-5.6)	57.9(+5.2)	67.5(+11.1)	85.4(-2.4)	80.5(+0.1)	59.9(-14.5)	89.1(-0.6)
SimSiam [4]	56.5(+34.6)	9.7(-0.3)	61.0(+8.3)	66.2(+9.8)	87.5(-0.3)	80.1(-0.3)	73.6(-0.8)	89.8(+0.1)
BYOL [7]	46.9(+25.0)	8.6(-1.4)	53.7(+1.0)	52.7(-3.7)	88.6(+0.8)	80.7(+0.3)	76.5(+2.1)	89.5(-0.2)
SimCLR [3]	48.7(+26.8)	15.5(+5.5)	61.3(+8.6)	58.7(+2.3)	86.9(-0.9)	79.9(-0.5)	74.3(-0.1)	89.3(-0.4)
w/o Z-Matching	49.1(+27.2)	21.1(+11.1)	55.8(+3.4)	45.1(-11.3)	88.3(+0.5)	81.2(+0.8)	81.3(+6.9)	89.7
w/o Fundament	45.3(+23.4)	0.0(-10.0)	58.8(+6.4)	48.5(-7.9)	87.0(-0.8)	79.5(-0.9)	76.6(+2.2)	89.0(-0.7)
w/o Affine head	57.7(+35.8)	17.9(+7.9)	57.6(+4.9)	53.4(-3.0)	89.4(+1.6)	82.3(+1.9)	79.8(+5.4)	89.8(+0.1)
Our GVSL (Whole)	68.4(+46.5)	28.7(+18.7)	60.8(+8.1)	79.9(+23.5)	91.2(+3.4)	81.3(+0.9)	82.2(+7.8)	90.0(+0.3)

➤ Superiority in global and dense prediction tasks



EXPERIMENT:

ABLATION STUDY

伊宇震

Pre-training	a) Linear: powerful representation				b) Fine-tuning: great transferring			
	SHC _{DSC%}	SAC _{DSC%}	CCC _{AUC%}	SBM _{DSC%}	SHC _{DSC%}	SAC _{DSC%}	CCC _{AUC%}	SBM _{DSC%}
	Inner scene			Inter scene	Inner scene			Inter scene
Scratch	21.9	10.0	52.7	56.4	87.8	80.4	74.4	89.7
Denosing [40]	31.4(+9.5)	9.3(-0.7)	57.9(+5.2)	28.3(-28.1)	90.3(+2.5)	80.5(+0.1)	75.6(+1.2)	89.7
In-painting [30]	32.3(+10.4)	5.9(-4.1)	57.1(+4.4)	25.0(-31.4)	90.4(+2.6)	80.3(-0.1)	79.9(+5.5)	89.9(+0.2)
Models Genesis [48]	47.4(+25.5)	22.5(+12.5)	60.4(+7.7)	44.9(-11.5)	90.3(+2.5)	79.9(-0.5)	80.7(+6.3)	89.4(-0.3)
Rotation [23]	56.1(+34.2)	21.9(+11.9)	62.1(+9.4)	54.1(-2.3)	90.6(+2.8)	81.1(+0.7)	77.1(+2.7)	89.6(-0.1)
DeepCluster [2]	55.9(+34.0)	4.4(-5.6)	57.9(+5.2)	67.5(+11.1)	85.4(-2.4)	80.5(+0.1)	59.9(-14.5)	89.1(-0.6)
SimSiam [4]	56.5(+34.6)	9.7(-0.3)	61.0(+8.3)	66.2(+9.8)	87.5(-0.3)	80.1(-0.3)	73.6(-0.8)	89.8(+0.1)
BYOL [7]	46.9(+25.0)	8.6(-1.4)	53.7(+1.0)	52.7(-3.7)	88.6(+0.8)	80.7(+0.3)	76.5(+2.1)	89.5(-0.2)
SimCLR [3]	48.7(+26.8)	15.5(+5.5)	61.3(+8.6)	58.7(+2.3)	86.9(-0.9)	79.9(-0.5)	74.3(-0.1)	89.3(-0.4)
w/o Z-Matching	49.1(+27.2)	21.1(+11.1)	55.8(+3.4)	45.1(-11.3)	88.3(+0.5)	81.2(+0.8)	81.3(+6.9)	89.7
w/o Fundament	45.3(+23.4)	0.0(-10.0)	58.8(+6.4)	48.5(-7.9)	87.0(-0.8)	79.5(-0.9)	76.6(+2.2)	89.0(-0.7)
w/o Affine head	57.7(+35.8)	17.9(+7.9)	57.6(+4.9)	53.4(-3.0)	89.4(+1.6)	82.3(+1.9)	79.8(+5.4)	89.8(+0.1)
Our GVSL (Whole)	68.4(+46.5)	28.7(+18.7)	60.8(+8.1)	79.9(+23.5)	91.2(+3.4)	81.3(+0.9)	82.2(+7.8)	90.0(+0.3)

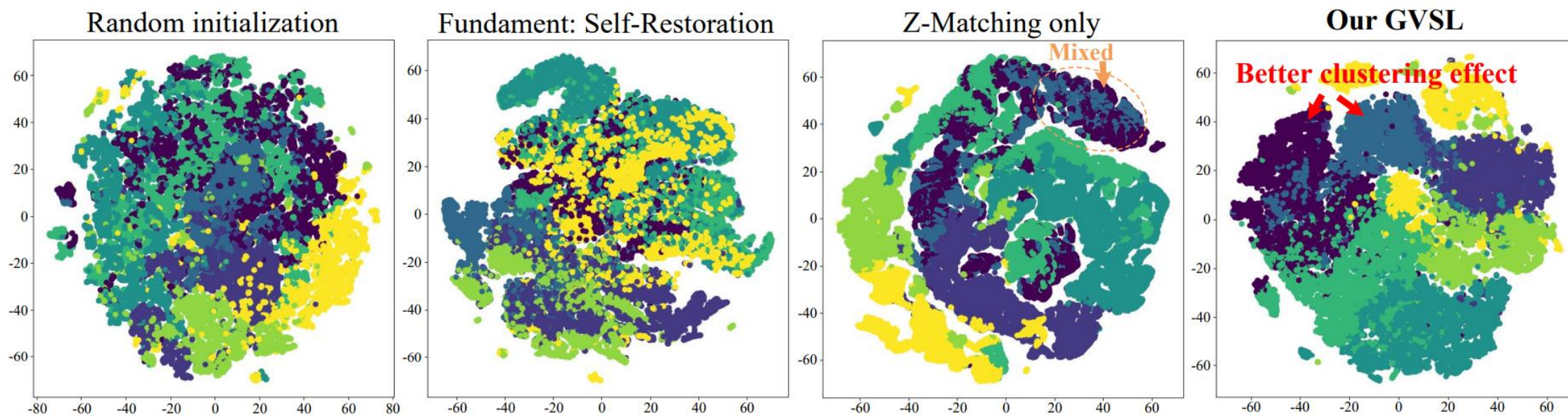
- When **only learning the GM** (Z-Matching), its initial weak representability makes the pre-trained model have inefficient optimization and brings poor representation
- When **adding the fundamental task**, our GVSL has better performance than the single two sub-pretext tasks on all four downstream tasks.
- When **removing the Affine head** in the Z-Matching head, it reduces 3.2% and 2.4% AUC in the linear and fine-tuning evaluations of CCC task due to the lack of global representation learning.



EXPERIMENT:

ABLATION STUDY

何宇霆

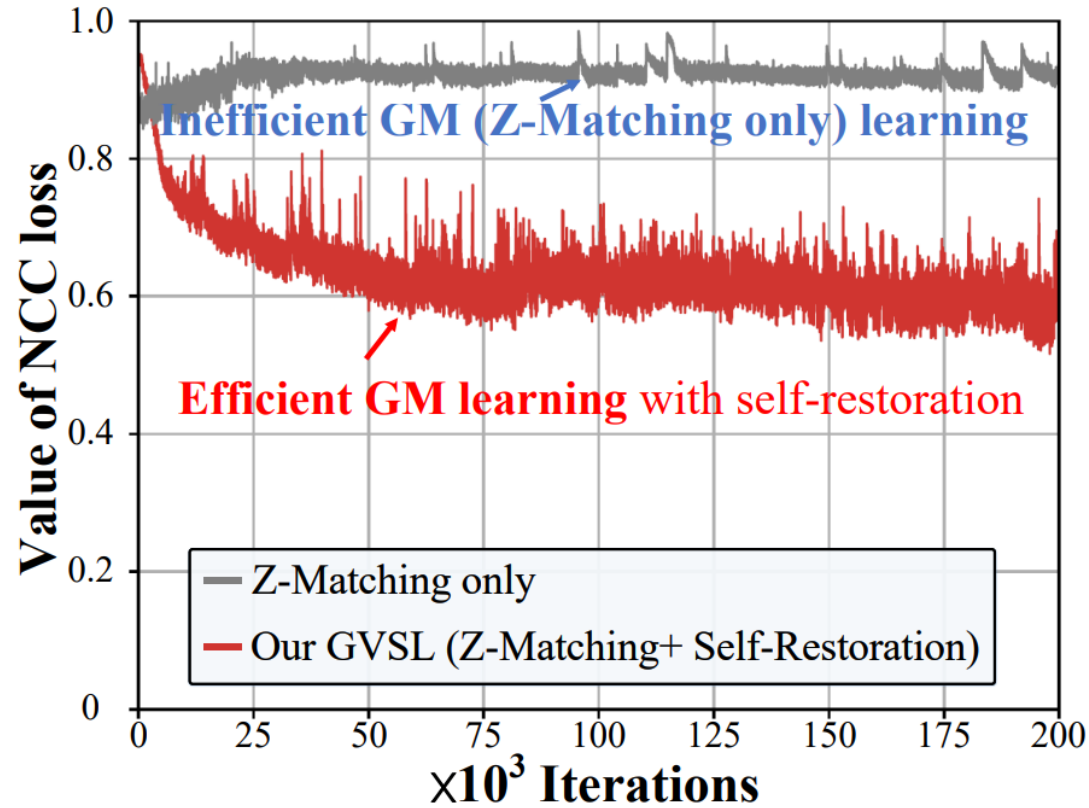


- Pre-trained models in the SHC task demonstrate our GVSL's promotion for the clustering effect.



EXPERIMENT: ABLATION STUDY

何宇霆



- The self-restoration learns a basic representation for visual semantic regions, thus driving the learning of inter-image similarity in our GM.



DISCUSSION AND CONCLUSION

伊宇霆

- **Conclusion of method:** Geometric Visual Similarity Learning based on the topological invariance of 3D medical images is a powerful prior for the representation pre-training of inter-image similarity;
- **Future work:** Expand the learning of inter-image similarity to some images without topological invariance, i.e., whole slide imaging.



DISCUSSION AND CONCLUSION

何宇霆

THANKS, Q&A

He Yuting (何宇霆)
Southeast University